



THE CEDAR BOOK

Inspiration for the use of Western Red Cedar

WESTERN RED CEDAR LUMBER ASSOCIATION | WESTERN RED CEDAR EXPORT ASSOCIATION

volume 6

THE CEDAR BOOK - volume 6

Inspiration for the use of Western Red Cedar

- | | | |
|----|---|---------------------------------------|
| 6 | Courtenay City Hall Renovation | Courtenay, BC, Canada |
| 10 | North Shore Credit Union
Environmental Learning Centre | Brackendale, BC, Canada |
| 14 | Gambier Retreat | Gambier Island, BC, Canada |
| 20 | Greenland Residence | Atlanta, GA, USA |
| 26 | Hillside House | Mill Valley, CA, USA |
| 30 | Knoll Ridge Cafe | Tongariro National Park, New Zealand |
| 34 | One Wadano Ski Chalet | Hakuba, Japan |
| 38 | Textile Clothing Footwear
and Leather Building | RMIT University, Melbourne, Australia |
| 42 | Royal Welsh College of Music
and Drama | Cardiff, Wales, UK |
| 48 | Sidwell Friends Middle School | Washington, DC, USA |
| 52 | Ty-Histanis Community
Infrastructure | Tofino, BC, Canada |
| 58 | Waiwhero Farm House | Tasman, New Zealand |



PRINTED IN HONG KONG | WRCLA CEDAR BOOK VOL. 6 - 1st Edition

EDITOR:

Jim Taggart

DESIGN:

Hunter Consulting International Inc.

COVER:

Textile Clothing Footwear and Leather Building

PHOTO CREDIT:

Trevor Mein

Copyright © 2012 Western Red Cedar Lumber Association.
With the contribution of Hunter Consulting International Inc.
All rights reserved.

Produced with the generous support of:



Sponsored by:



WESTERN RED CEDAR EXPORT ASSOCIATION
(WRCEA) | WWW.WRCEA.ORG



WESTERN RED CEDAR LUMBER ASSOCIATION
(WRCLA) | WWW.REALCEDAR.ORG

WESTERN RED CEDAR – Sustainable by Nature

The 6th version of the Cedar Book profiles stunning and award winning architecture from inspired architects around the world. These architects continue a trend that was started centuries ago when native peoples of the Pacific Northwest recognized the value of using this very unique wood species. Western Red Cedar's natural durability, performance characteristics and versatility made it the preferred choice for building ocean-going canoes, post-and-beam houses and lodges. Today's discerning architects and builders enhance their projects with this beautiful, versatile and sustainable building material. Nature still knows best. Despite all efforts at imitation, no man-made product can match the beauty, performance and longevity of Western Red Cedar.

Western Red Cedar is one of nature's truly remarkable materials. It produces fewer greenhouse gases, generates less water and air pollution, requires less energy to produce than alternatives and comes from a renewable and sustainable resource. More than ever before, we must find ways to reduce the pressure on our planet's environment and finite resources. By choosing products with a light carbon footprint and by reducing waste, we can have a real impact on climate change now, and into the future. As part of their commitment to transparency, Western Red Cedar producers now have Environmental Product Declarations available for siding/cladding and decking products.

We hope this book will inspire you to consider Western Red Cedar for your next project. Need help selecting, specifying or sourcing the right Western Red Cedar product? Contact the Western Red Cedar Lumber Association via email to info@wrcla.org and we will be glad to assist.

Thank you for your interest in Western Red Cedar.



LOCATION:
Atlanta, GA, USA

PROJECT TYPE:
RESIDENTIAL

Greenland Residence

This house is sited on the high side of an undulating wooded property on the outskirts of Atlanta, close to, yet set apart from, the surrounding mixed-use neighborhood.

Conceived as a home for three generations, the house is arranged in an open plan made up of discrete public and private spaces. Careful attention was paid not only to the design of the spaces for each generation of occupants, but also to the thresholds and interfaces between them.

Organized as two volumes slipping past one another, the building creates a series of indoor and outdoor rooms with each zone open to framed views in multiple directions.

Substantial effort has been made to reduce the carbon footprint of the house. Oriented along an east-west axis, the building incorporates multiple low-tech sustainable features, including rainwater harvesting and solar shading. The home also integrates more high-tech systems such as geothermal heating and cooling, argon gas-insulated glazing, recycled content and high-efficiency appliances.

The entry approach is a long, private driveway, from which the house reveals itself as solid white volumes connected by planes of cedar and glass, set beneath a low-sloped roof. Separated by clerestory glazing, the pair of alternating roof planes hover high above the second floor.

PROJECT CREDITS

Client:

Stephen and Kim Flanagan

Architect:

Studio One Architecture Inc.

Structural Engineer:

Quinn & Associates

Civil Engineer:

Pyramid Engineering and Development LLC

General Contractor:

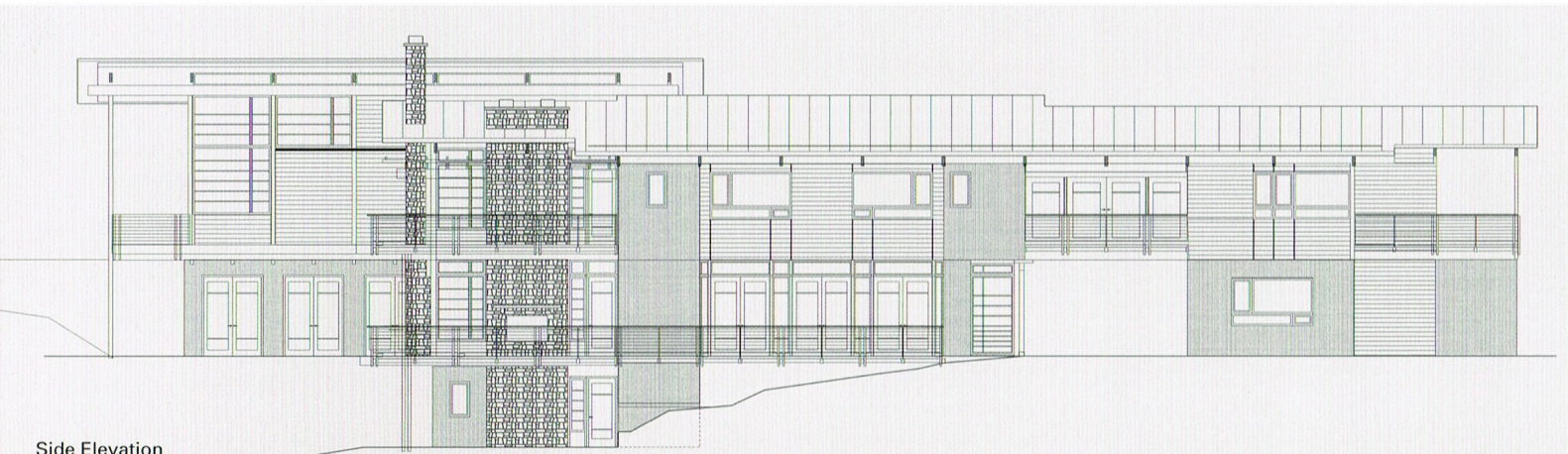
Pinnacle Custom Builders

Photography:

Rion Rizzo, Creative Sources Photography

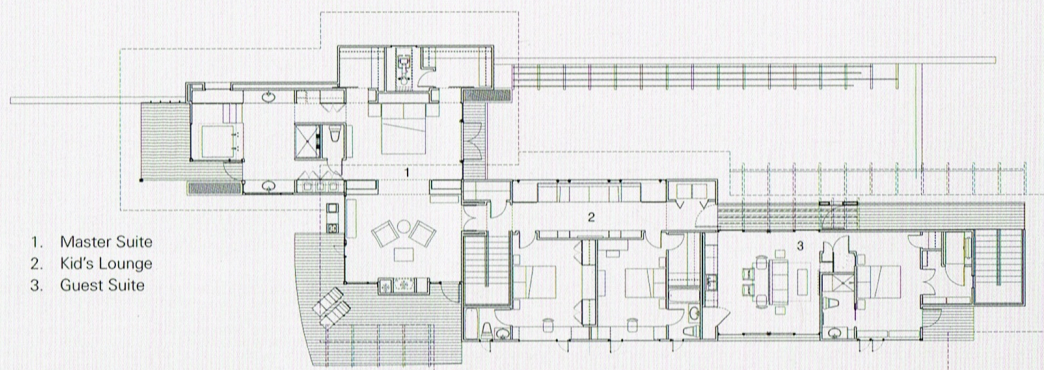


Taking cues from both the natural surroundings and the somewhat disparate preferences of the husband and wife; wood became a critical element and common denominator in developing a material palette and architectural language for the house. The use of Western Red Cedar on the exterior fulfilled multiple design criteria: blending with the surrounding site; creating a warm and inviting atmosphere essential to the wife; and evoking memories of the Rocky Mountain cabins of the husband's youth.

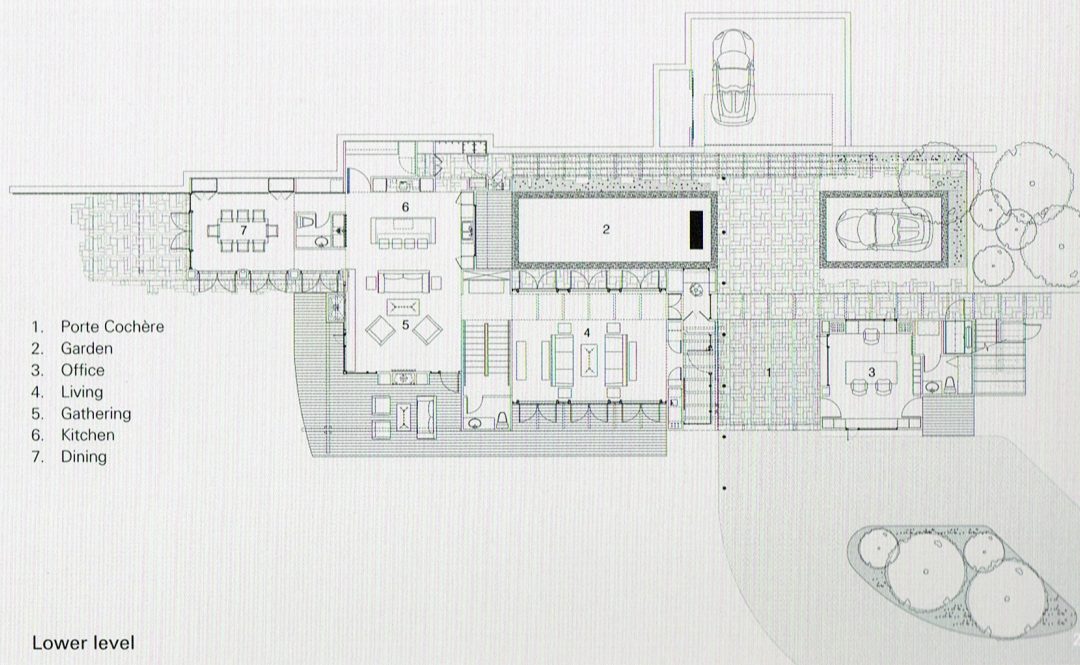


Side Elevation





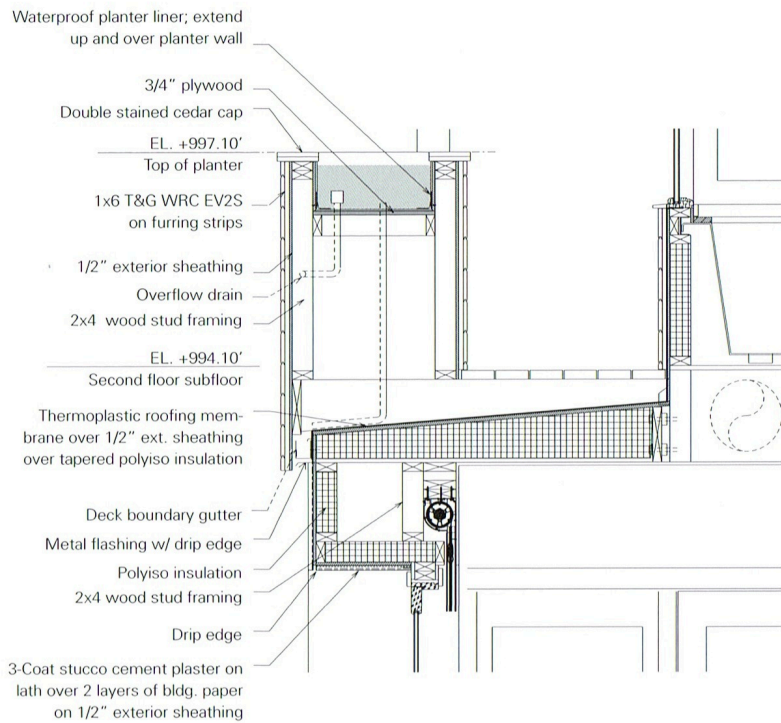
Upper level



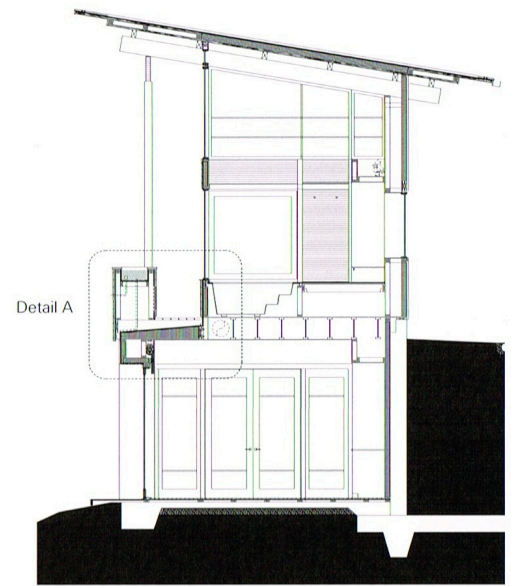
Lower level

Using a combination of Douglas fir and yellow pine elements for structure and finishes, the design sought to fuse clean, contemporary lines with traditional references in a composition that is expressive, authentic, indigenous, and warm.





Detail A



WRC SPECIFICATIONS

Grade: A & Better Clear
 Profile: V-joint tongue & groove
 Size: Milled from 25 x 150mm (1 x 6 in)
 Fastening: Stainless steel fasteners
 Applied Finish: Cabot Australian Timber Oil